

Sixth Annual
State Special Needs Roadeo
Lawrenceville, Georgia
February 5, 2011



Benfield Elementary School
1221 Old Norcross Rd.
Lawrenceville, Georgia 30046

Contents:

- **Acknowledgement**
- **2011 GAPT Special Needs Committee**
- **Introduction and History of the Special Needs Team Safety Rodeo**
- **Event Scoring Sheets-2011**
- **2011 State Special Needs Team Safety Written Test**
- **Team Registration Form**
- **Judge/Volunteer Registration Form**
- **Reporting Times for Contestants and Judges**
- **Recommend Overnight Accommodations if Required**
- **Directions To Rodeo Site**

Special Acknowledgement

The GAPT (Georgia Association for Pupil Transportation) Special Needs Committee wishes to give a special thank you to GAPT and all of their supporting vendors, Glenda Pruitt (Henry County Schools), Costco in Morrow, Georgia, and Sam's Club in Jonesboro for their sponsorship of the Fifth Annual State Special Needs Team Safety Competition held in Clayton County Georgia February 6, 2010.

Without their support and contributions this safety competition would not have been possible. Their support made it possible for Georgia's first and second place winners to represent us at the National Special Needs Team Safety Competition in March 2010 in Orlando, Florida.

We thank the GAPT for their support of the 2011 event and making it possible to send our Georgia teams to Kansas City, Missouri to compete at the National level on March 12, 2011.

Accolades

The GAPT Special Needs Committee expresses congratulates to the winners of the 2010 State Special Needs Roadeo and Safety Competition. We also thank the Clayton County School System for hosting the Fifth Special Needs Roadeo for the State of Georgia, which was held February 6, 2010. Winners of that competition were:

1st Place	Clayton County	David O’Keeffe and Jackie Turner
2 nd Place	Forsyth County	Louise Martin and Becky Martin
3 rd Place	Dawson County	Lynda Hudson and Robin Parker
4 th Place	Gwinnett County	Jack Capps and Karen Ford
5 th Place	Clayton County	Paulette Raper and Angie Dorris
6 th Place	Cherokee County	Dale Roberts and Rhonda Fiddler

Representing the State of Georgia at the National Competition in Orlando was:

Clayton County David O’Keeffe and Jackie Turner, placing 1st out of 19 teams

Forsyth County Louise Martin and Becky Martin represented Georgia very professionally as well.

State Special Needs Team Safety Competition
2010-2011 Competition Advisory Committee

Bettye Adams	Whitfield County	Dalton, Ga.
James Cantrell	Barrow County	Winder, Ga.
Sharon Conrad	Dept. of Community Health Injury Prevention Program	Atlanta, Ga.
Rosalyn Gibby	Henry County	McDonough, Ga.
Charlene Majors	Gwinnett County	Lawrenceville, Ga.
Mark Matus	Cherokee County	Canton, Ga.
Kathy Mewborn	Rockdale County	Conyers, Ga.
Lanetta Mills	Cobb County	Marietta, Ga.
Don Moore	Gwinnett County	Lawrenceville, Ga.
Tom Patton	Houston County	Warner Robins, Ga.
Lanier Pruitt	Forsyth County	Cummings, Ga.
Suzanne Ruggiers	Walton County	Monroe, Ga.
Rella Smith	Clayton County	Jonesboro, Ga.
Dennis Stokes	National Bus Sales	Atlanta, Ga.
Shelia Towers	Cherokee County	Canton, Ga.

Hosting County: Gwinnett County, Lawrenceville, Ga.
Grant Reppert, Director

Charlene Majors, Committee Chairperson
Gwinnett County, Lawrenceville, Ga.

Introduction of the Special Needs Team Safety Competition

The Pupil Transportation Safety Institute was the founder of the National Special Needs Team Safety Roadeo and believes transporting children with special needs poses unique challenges. The National Roadeo is now managed by Edupro Group and the National Association for Pupil Transportation (NAPT). The Roadeo is one way the staff and friends support drivers and monitors who are committed to providing the safest possible transportation for children with special needs.

There are no losers in the Special Needs Team Safety Roadeo because it is focused on learning, not competition and every effort is made to provide contestants with hands-on opportunities to learn new safety procedures and become familiar with new safety equipment and materials.

The Special Needs Roadeo is a way to provide needed information, training, and support to drivers and monitors in a critically challenging area of pupil transportation. It improves special needs drivers and monitors skills required to perform their daily task of transporting students with special needs.

There are three principals which make the special needs roadeo unique:

Principal 1

Learning, not competition

To some extent the special needs Roadeo is competitive, the primary purpose is *learning*.

Principal 2

Teamwork

The special needs Roadeo stresses teamwork. The driver and monitor compete as a team instead of individuals. Teamwork is promoted by grouping the contestants and rotating groups through the events so that teams stick together over the course of the day. The teams have the chance to share ideas and experiences while they await their turn to compete. Their wait is enjoyable and gives them an opportunity to establish new friendships and connections. Each group will have “a group leader” assigned to them to guide them through each of the events and answer any questions or concerns during the day.

Principal 3

Fun

Learning information is much easier when you are having *fun*. The competition is down played and the teams have an opportunity to interact with other teams. Contestants are receptive to learn new tips and ideas about safely transporting children with special needs. Most will agree that more training and learning gets accomplished during special needs Roadeo than in most formal training classes.

Special Needs Roadeo Events
This booklet is not permitted on the
actual Roadeo Course and will be confiscated.

At no time should guests, family, spectators, co-workers or any other unauthorized people be present at Safety Competition events. They may observe from a distance. Contestants may not observe other contestants on the course at any time.

Authorized persons are: Assigned Judges, Score Collectors, GAPT Special Needs Committee Members, Mechanic if needed, Approved Photographer / Videographer and Contestants who are actually participating in the event at the time. Contestants who have not been sent to an event must wait away from the events (either in the holding area inside the building or at an outside area where no moving or stationery events can be observed.) **Failure to follow this rule will result in automatic disqualification from the competition.**

Pre-check

A CDL inspection and procedure are conducted on a lift-equipped bus and all special needs items such as lift operation, securement straps, fire blanket, seat belt cutter, etc. must be checked. The driver and monitor can conduct the pre-check as a team.

Wheelchair loading and securement

This event focuses on the loading and securement of a wheelchair. Drivers and monitors may overlook things that could cause student injury. Drivers and monitors load and secure a wheelchair with a student on board. They are judged on items such as making sure a hand is on the wheelchair at all times when the chair is on the lift, setting wheelchair brakes on the lift, sensitivity towards the student, checking for head clearance before moving wheelchair and student through the lift door, selection of proper securement points on the wheelchair, adequate tightening of wheelchair securement straps; checking for securement; etc.

Car Seat Securement

This event focuses on the proper placement and securement of a car seat on the bus. Drivers and monitors may overlook things that could result in student injury. Drivers and monitors must check car seat and identify label to ensure compliance with FMVSS. Car seat must be in upright position and must fully fit on seat. The car seat must be very tight against the bus seat. Participant must check the tightness of the installation at the belt path. Securing the child in the car seat must be done to ensure the child is safe and comfortable. Internal harnesses must be buckled and used correctly.

Special Needs Evacuation

The driver and monitor are presented with an emergency scenario on a special needs bus carrying “students” with a variety of special needs. They are graded on their response to the emergency, including whether they select the “best exit,” whether they move students far enough away from the bus, and how quickly they are able to safely evacuate all of the students from the bus. The driver and monitor will be read the scenario and timed by a stop watch for their hands on response.

Driving Test

The driving course is based on the traditional Roadeo course. They include the “serpentine”, the “alley dock backing”, and the “railroad crossing” events. However, there are some unique twists.

Drivers are faced with “challenging student passengers” in which they will be graded on how effectively they handle students with emotional disabilities as they “act out” on the bus. Drivers and monitors will be given the “BIOS” of the challenged students so they know some background about them and their special needs.

At the same time, drivers are being judged on their “TLC” driving skills-their ability to carefully maneuver a bus through turns and over speed bumps while transporting fragile passengers. TLC driving skills will be measured by a ping pong ball placed on top of a soda bottle stuck into a box of (clean) kitty litter in the rear of the bus. It will measure how much the rear of the bus sways and shakes as it stops and starts, turns and goes over speed bumps.

The following information and score sheets will help you become familiar with the scoring of each event and how the event will be completed by the teams.

Day of the Roadeo: Registration at 7:30, walk-thru at 8:00 and events at 9:00.

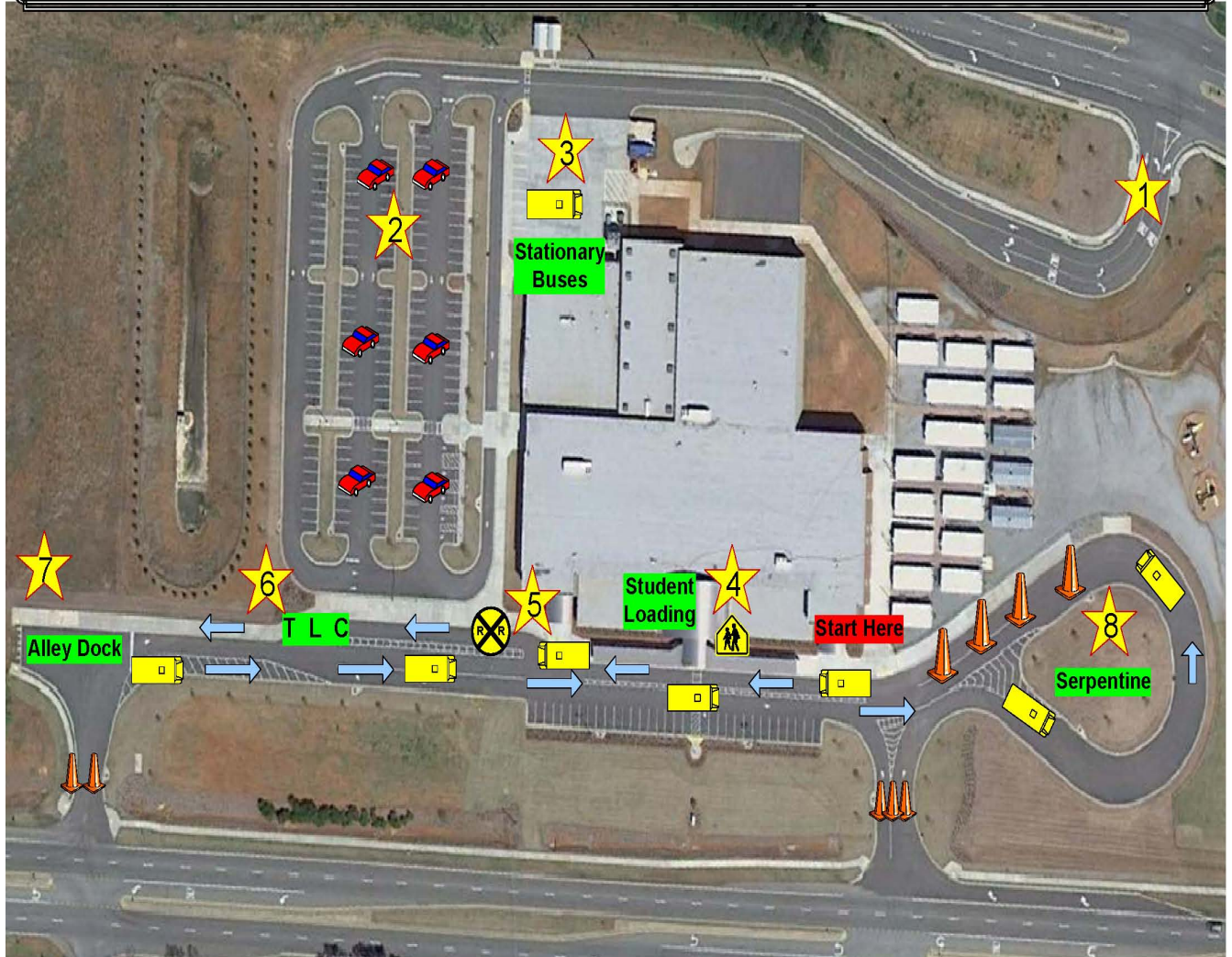
Reporting Times

Contestants	Registration	7:30
	Walk-thru	8:00
	Start Time	9:00

Judges & Volunteers Report 7:00

Roдео Event Layout

- | | |
|--|-----------------------|
| 1) EVERYONE ENTER ONLY FROM RIVERSIDE PARKWAY | 5) R/R CROSSING |
| 2) PARKING FOR EVERYONE | 6) TLC |
| 3) STATIONARY BUSES (WC LOADING, CAR SATS, PRE-TRIP, EMERGENCY EVAC) | 7) ALLEY DOCK BACKING |
| 4) STUDENT LOADING | 8) SERPENTINE |



2011 State Special Needs Team Safety Rodeo Score Sheet

SPECIAL NEEDS BUS PRE-CHECK EVENT

Team #: _____

Possible Score: 79

Instructions: Place a check mark in the box for each item adequately checked. Deduct one point from the possible score of 79 for every item not adequately checked (blank box).

EXTERIOR INDICATORS

- Clearance/markers lights
- Headlights - low
- Headlights - high
- Sign lights
- Rear running lights
- Rear license plate light
- Turn signals
- 4-way flashers
- Amber pre-warning flashers
- Red student flashers
- Brake lights
- Reverse lights
- Reverse beeper
- Reflectors
- Reflective tape

EXTERIOR EQUIPMENT

- Exhaust pipe intact
- Drive shaft guards
- Springs and shocks (visual)
- Mud flaps (if present)
- Antenna (if present)
- Battery compartment (inside)
- Mirrors secure/adjusted
- Hood latched
- Static vehicle leaks
- Pressure engine leaks
- Body damage
- Tire inflation
- Tire tread
- Sidewalls
- Wheel rims
- Grease seals
- Lugs
- Valve stems intact
- Fuel cap secure

INTERIOR

- All switches and controls
- All gauges
- DOT sticker (if present)
- Registration/Insurance
- Interior cleanliness
- Service brake - static check
- Emergency brake - verbalize
- Dome lights
- Stepwell light
- Handrail
- Emergency exit lights
- Wipers and washers
- Horn
- Seat belt cutter(s)
- 2-way radio on (if present)
- First aid kit
- Body spill kit (if present)
- Fire extinguisher
- Reflectors
- Fire/Evacuation blanket (if present)
- Steering wheel play
- Driver seat adjustment
- Driver seat belt functional
- Emergency windows - open, buzzer, label
- Emergency doors - open, buzzer, label
- Emergency roof hatches - open, buzzer
- Seat cushions fastened
- Seat belts functional and accessible
- WC securement straps
- WC passenger restraints
- WC restraint instructions displayed
- Lift operation - deploy, lower, raise, stow
- Lift platform roll stops functional
- Lift safety shut-offs and lights functional
- Manual lift operation - accurate explanation
- Pre-check completed in 12 minutes or less (10 pts.)

TIME: _____ (tie-breaker only)

TOTAL SCORE (out of 79): _____

Scorer #1 Initials _____ **Head Judge Initial's** _____

Scorer #2 Initials _____ **Final Score:** _____

2011 State Special Needs Team Safety Rodeo Pre-Check Contestant Procedures

Driver and attendant may perform the pre-check together or individually. The scenario for this pre-check event is that you have been assigned a new bus with which you are unfamiliar. *Important: Every item checked must be verbalized as well as visually examined, touched or pointed out.*

ITEM	PROCEDURE
Lights	All lights must be activated and checked.
Reverse beeper	Must be activated and checked.
Reflectors and reflective tape	Must be pointed out and checked.
Exhaust, drive shaft, springs and shocks	Must be pointed out and checked for breaks, broken shackles and hangers, etc.
Mud flaps	Must be pointed out.
Antenna	Must be pointed out.
Battery compartment	Compartment door or hood must be opened to visually examine interior of compartment for unusual items, etc.
Mirrors	All mirror brackets must be physically checked, proper adjustment must be checked from the driver seat.
Hood	Latches must be pointed out and status checked.
Static leaks	Before engine is started, area underneath bus is checked for signs of leaking fluids.
Pressure leaks	While engine is running, area beneath engine is checked for signs of leaking fluids.
Body damage	Exterior of bus is visually checked for dents, scrapes, cracked glass, etc.
Wheels and tires	All items listed must be examined and checked for each tire; lightly kicking inside dual tires does not constitute an adequate check for inflation.
Fuel cap	Door must be opened and cap tested by hand.
Switches and controls	Every switch and control must be operated and checked.
Gauges	All gauges must be identified and checked with engine running.
DOT sticker, registration	Must be identified.
Cleanliness	Interior cleanliness is a DOT inspection item and important to health of children with special needs; status of floor, dash/driver area, and trash cans must be inspected.
Service brake	<p>Air brake buses: a complete static air brake check must be conducted, as follows: engine is run to build air; wigwag is set; spring brake is released; engine is shut off but key left in accessory position; 1 minute check for system leaks while monitoring air gauge; pump down check for low air warning devices (wigwag, light, buzzer - each must be named); pump down check for spring brake operation; engine restarted to check air build.</p> <p>Hydraulic brake buses: with engine off, brake pedal checked for firmness and booster pump checked.</p>
Emergency brake	Rolling emergency brake check is explained verbally but not conducted.
Interior lights	All are operated and checked including emergency exit lights.

**2011 State Special Needs Team Safety Roadeo Score Sheet
WHEELCHAIR LOADING EVENT**

Team #: _____

Possible Score: 90

Instructions: Place a check mark in the box for each item adequately checked. Deduct five points from the possible score of 90 for every item not adequately checked (blank box).

- Student flashers (amber, red) - verbalize
- Setting emergency brake - verbalize
- Check mirrors to ensure traffic is stopping - verbalize
- Prior to activation of lift, check for adequate clearance in lift zone - verbalize
- Open and secure lift door
- After deploying and lowering lift, check roll stops
- Greet passenger promptly and positively
- Check passenger postural belt and check wheelchair for transport-worthiness
- Place passenger on lift facing outward from bus, in proper position on platform
- Set WC brakes promptly after placing WC on lift
- Remind passenger to keep hands in lap
- Does not ride lift with passenger
- Driver and/or attendant grasp WC at all times while on lift
- Check head clearance into bus - verbalize
- Inform passenger before raising lift
- WC moved to securement station promptly and WC brakes set
- Lift door closed and secured
- Loading completed in less than 5 minutes

TIME _____ (tie-breaker only)

TOTAL SCORE (out of 90): _____

Scorer #1 Initials _____ **Head Judge Initial's** _____

Scorer #2 Initials _____ **Final Score:** _____

2011 State Special Needs Team Safety Roadeo Wheelchair Loading Event Contestant Procedures

Event begins with driver and attendant seated with seat belts fastened. The scenario is that you are picking up one student using a wheelchair.

Important: The bus will not be moved during the event. Driver will verbalize his/her actions while simulating “pulling up to the stop.” Driver or attendant must verbally indicate when loading is completed and the student is ready to be secured.

ITEM	WHAT TO LOOK FOR
Student flashers	Driver should verbalize activating ambers as approaching stop and reds when stopped.
Emergency brake	For safety, brake should be set as event starts; driver should simulate and verbalize setting it.
Mirrors	Driver should verbalize checking roadway for approaching traffic while pulling up and stopping.
Lift zone	Driver should verbalize checking stop area for best location to drop lift.
Lift door	Driver or attendant (their choice) should open lift door fully and secure with chain or latch.
Lift	Lift should be lowered and roll stops physically checked.
Greeting passenger	Driver or attendant should quickly go to and warmly greet the waiting student.
Postural belt and wheelchair	Driver or attendant should check that passenger is wearing a properly adjusted postural belt and that the wheelchair is in safe condition (spokes, brakes, hand and foot rests, etc.)
Passenger on lift	Passenger should be gently wheeled onto lift, facing away from bus; passenger should be placed in proper centered position on lift platform, not to one side.
WC brakes	WC brakes should be set as soon as passenger is placed on lift platform.
Hands on lap	Driver or attendant must remind passenger to keep hands in lap for safety as lift is raised.
Riding with passenger	If driver or attendant rides lift with passenger, five points are deducted (unsafe practice).
Hold chair	Either driver or attendant or both must have a firm grip on the wheelchair at <u>all</u> times while on the lift.
Head clearance	Driver or attendant must check for head clearance entering the bus; check must be verbalized.
Informing passenger	Passenger should be notified before lift is operated.
Moved to station	Once lift is raised, passenger in WC should be quickly moved from platform to the chosen securement station inside the bus; WC brakes must be set.
Lift door	After lift is stowed, lift door should be shut and secured.
Time	Passenger should be safely positioned in chosen securement station inside bus within five minutes or five points are deducted; event should be terminated after eight minutes if not complete and tasks remained should be considered deducts.

**2011 State Special Needs Team Safety Rodeo Score Sheet
WHEELCHAIR SECUREMENT EVENT**

Team #: _____ **Possible Score:** 90

Instructions: Place a check mark in the box for each item adequately checked. Deduct five points from the possible score of 90 for every item not adequately checked (blank box).

- Continuous communication and sensitivity toward passenger
- Wheelchair not placed in rearmost position if other position available
- Center wheelchair in securement station
- Tie-down straps attached to 4 appropriate floor pockets/mounts
- Tie-down straps attached to 4 suitable locations on the wheelchair:
 - Left rear tie-down
 - Right rear tie-down
 - Left front tie-down
 - Right front tie-down
- WC brake released prior to tightening tie-downs
- Tie-down straps tightened adequately:
 - Left rear tie-down
 - Right rear tie-down
 - Left front tie-down
 - Right front tie-down
- Occupant lap and shoulder restraint properly routed, attached, and secured
- Passenger informed prior to “shake” test
- Stability “shake” test conducted prior to re-setting mobility device brake
- WC brake re-set when securement completed
- Securement completed in 10 minutes or less

TIME _____ (tie-breaker only)

TOTAL SCORE (out of 90) _____

Scorer #1 Initials _____ **Head Judge Initial's** _____

Scorer #2 Initials _____ **Final Score:** _____

2011 State Special Needs Team Safety Rodeo Wheelchair Securement Event Contestant Procedures

Securement event begins after loading event is finished and judges have completed their score sheets for the loading event. Driver and attendant are to secure the wheelchair and passenger just loaded. Driver or attendant must verbally indicate when wheelchairs, and passenger, are fully secured to their satisfaction.

ITEM	WHAT TO LOOK FOR
Communication	Driver and attendant should be warmly interacting with passenger throughout the event.
Station choice	If more than one securement station is available, wheelchair is NOT placed in rearmost station. If a position between front and rear axle is available, it should be utilized.
Position in station	As much as possible, wheelchair should be centered in the selected securement station.
Floor attachments	Four tie-down straps should be utilized; attachment points should be selected that allow for adequate tightening and minimize strap contact with wheelchair components. Floor attachment points should be laterally symmetrical.
Wheelchair securement points	Tie-down straps should be attached to identified securement points (“D” rings) on transportable wheelchairs or at or near welded joints as near as possible to the center of mass (bottom of seat) on the main wheelchair frame on older wheelchairs - never to removable components, wheel spokes, or crossbars; tie-down hooks should be fully engaged so they can not come loose; tie-down straps should not be twisted more than ½ turn and hooks should be symmetrically oriented; tie-down straps should not cross or contact wheelchair components unless there is no alternative. (Note: driver or attendant may bring their own commercially available removable certified attachment “loops” to assist in attaching tie-downs if they wish.)
WC brakes	WC brakes must be released before tightening tie-downs or five points are deducted.
Tightening tie-downs	All four tie-down straps must be very tight; with wheelchair brake released, no wheelchair wheel should move more than one inch on the bus floor.
Lap/shoulder restraint	Lap belt must be routed as close to passenger hips as possible, not over wheelchair components (arm rests, wheels) unless there is no alternative; lap belt should be snug over hips, not across stomach; lap belt buckle should be positioned at hip, not middle of stomach; shoulder belt should lie across collar bone and be snug but not excessively tight; lap and shoulder belt should be attached to proper points for system being used. Driver and attendant may consult posted operating instructions for restraint belts if they wish.
Informing passenger	Before conducting a “shake test,” passenger is alerted.
Shake test	With wheelchair brake released, driver or attendant attempts to move secured wheelchair. If chair isn’t tight enough, situation is corrected.
Wheelchair brake	Wheelchair brake should be set after satisfactory shake test.
Time	Wheelchair be secured within ten minutes or five points are deducted; driver and attendant should verbally indicated when they are finished; event should be terminated after twelve minutes if not complete and tasks remained should be considered deducts

2011 State Special Needs Team Safety Rodeo Score Sheet
EMERGENCY EVENT (SAMPLE ONLY - specific evaluation criteria vary depending on emergency scenario)

Team #: _____ **Possible Score:** 100

Instructions: Place a checkmark in the box for each item adequately checked. Deduct five points from possible score of 100 for every item not adequately completed (blank box).

- Contact base
- Protect scene
- Reassure students
- Make the evacuation decision
- Select the best exit
- Utilize bystanders
- Supervise and attendant to students
- Administer first aid
- Utilize safest possible emergency techniques for each student
- Move passengers to safe area
- Evacuate in two minutes or less (if evacuation is called for)

TIME _____ (tie-breaker only) **TOTAL SCORE (out of 100)** _____

Scorer #1 Initials _____ **Head Judge Initial's** _____

Scorer #2 Initials _____ **Final Score:** _____

2011 State Special Needs Team Safety Rodeo Emergency Evacuation Contestant Procedures

Driver and attendant are allowed two minutes to inspect bus, student securement, etc. prior to start of event. Students are seated at start of event. Judges and any non-participating observers should be identified to driver and attendant. Driver and attendant should take their seated positions before event begins and should be wearing their seat belts. *Important: Driver should NOT move bus during this event.* Emergency scenario will be read two times to the contestant team. Event (and timing) begins at conclusion of second reading.

2011 State Emergency Evacuation Student Profiles:

Student #1

Brian: 13 year old male student who has the advanced stages of AIDS. He lives with both parents in a family setting. He is an Autistic child who is non-verbal and diagnosed with hemophilia

Student #2

Elizabeth: 10 year old female riding the bus on a 504 waiver. She had a compound fracture of her left leg and Asthma. Elizabeth still needs the aid of crutches to get around. She can put some weight on the leg but not able to bare weight for extended period of time. She uses a wheelchair to load and unload to and from the bus.

Student #3

Terrence: 8 year old student with a seizure disorder who attends a day residential care center. He is going through extensive emotional therapy due to a recent family trauma. For security and comfort Terrence carries a picture of his family with him at all times. He wears a safety vest to ensure he remains in his seat during transport.

2011 State Special Needs Team Safety Rodeo Score Sheet
MANAGING CHALLENGING STUDENT BEHAVIOR EVENT

Team #: _____

Possible Score: 100

Instructions: Place a check mark in the box for each item adequately checked. Deduct five points from the possible score of 100 for every item not adequately checked (blank box).

- Uses student flashers properly when loading students
- Sets parking brake when loading students
- Attendant disembarks to supervise students approaching bus
- Greets students in a positive manner to establish rapport
- Explains bus rules to students in a friendly but firm manner
- Attempts to keep misbehaving students apart
- Attempts to keep students out of rear seats
- Attempts to reasonably enforce stated rules
- Attendant attempts to sit behind students
- Attempts to ignore and extinguish minor irritating behaviors
- Attempts to engage students in distracting discussions and/or activities
- Uses positive language to establish communication with students
- Intervenes appropriately to stop unsafe student actions
- Attendant and driver maintain verbal self control at all times and avoid unnecessary physical confrontations
- Attendant and driver maintain verbal communication and mutual support throughout the bus ride
- Sets parking brake when unloading students
- Uses student flashers properly when unloading students
- Instructs students in proper unloading behaviors before releasing them
- Attendant disembarks to supervise students as they get off bus
- Driver and attendant say goodbye to students in a positive fashion regardless of what has transpired

TOTAL SCORE (out of 100) _____

Scorer #1 Initials _____ **Head Judge Initial's** _____

Scorer #2 Initials _____ **Final Score:** _____

2011 State Special Needs Team Safety Roadeo Managing Challenging Student Behavior Contestant Procedures

Adults acting as emotionally disturbed students also serve as judges for this event. This event occurs simultaneously with the driving course. The scenario is that driver and attendant are substituting on a special educational program route and transporting these three students for the first time. The three “students” are waiting to board your bus at the same bus stop.

2011 State Special Needs Safety Roadeo Emotionally Disturbed Students:

William is a 15 year old who is being transported to Cross Roads an Alternative High School. William was arrested and removed from his home for sexually abusing a family member a little over a year ago. Since that time he has successfully completed all requirements set down by the court. William cannot be left unsupervised with anyone under the age of 18. He is easily agitated by other students and is known to be aggressive toward them. He often refuses to follow directions unless provided with motivation to so.

Kenny is a 16 year old male with Autism, he is non verbal. He moves very slow and when hurried gets very violent and resists any kind of directions given by driver or monitor. Any changes upset his world and over the past school year he has changed schools 3 times, has a new teacher and his parents have divorced.

Sandee a 14 year old diagnosed with Down’s syndrome. She is very smart and loud, she wants to tell the driver and monitor how to run the route. If the route changes in any way she can get very agitated with anyone around her. She is prone to impulsive behavior and can be unpredictable. Sandee has been a runner if left alone. She wants to please adults.

**2011 State Special Needs Team Safety Rodeo Score Sheet
CAR SEAT SECUREMENT**

Team #: _____

Possible Score: 120

Instructions: Place a check mark in the box for each item adequately checked. Deduct ten points from the possible score of 120 for every item not adequately completed (blank box).

- Checks and identifies label to be sure car seat is in compliance with FMVSS
- Chooses appropriate position/ location for car seat
- Car seat fits fully on the bus seat
- Bus lap belt is properly routed through car seat
- Participants check tightness of installation at belt path
- Car seat does not move more than one inch forward, backward, or side to side
- The seatbelt buckle is forward of the belt path
- Harnesses are buckled and used correctly
- The harness does not allow any slack on the child's body
- Harnesses must be threaded through the correct harness slot
- The harness retainer clip must be connected and placed at armpit level
- Completes securement in less than 10 minutes

TIME _____ (tie-breaker only) TOTAL SCORE (out of 120) _____

Scorer #1 Initials _____ **Head Judge Initial's** _____

Scorer #2 Initials _____ **Final Score:** _____

2011 State Special Needs Team Safety Rodeo Score Sheet Car Seat Securement Contestant Procedures

ITEM	WHAT TO LOOK FOR
Check for label	Participant must check car seat and identify label to ensure compliance with FMVSS.
Positioning of seat	Car seat must be in upright position and must fully fit on seat. It must not be placed in a seat with an emergency exit window. Car seat must not be placed in aisle position with an ambulatory child in the window position of the same seat.
Safety seat	Bus lap belt must be properly routed through the car seat as per the manufacturer's instructions. The car seat must be very tight against the bus seat. Participant must check the tightness of the installation at the belt path. The car seat is tight when the participant cannot move the seat forward or backward more than one inch or side to side more than one inch. The seat buckle must be forward of the belt path.
Secures child in car seat	Harnesses must be buckled and used correctly. Harnesses must be threaded through the correct harness slot. Harnesses must be snug. A snug harness should not allow slack on the child's body. Participants should test the snugness of harness by trying to "pinch" the webbing together near the shoulder. The harness retainer clip must be connected and placed at armpit level.

2011 State Special Needs Team Safety Roadeo Driving Course Contestant Procedures

Driving course events for the Special Needs Roadeo take place a small school bus. As in the real world, during the Special Needs driving course, driver and attendant will also have to contend with the distractions of managing three emotionally disturbed “students.” The three students will be picked up at the start of the course and dropped off at the end. *Note: attendant MAY assist driver (observing, alerting, etc.) during any driving course event.*

Special Needs Driving Course Events:

- **Railroad Crossing:**
- **TLC:**
- **Alley Dock:**
- **Serpentine:**

2011 State Special Needs Team Safety Rodeo Score Sheet
RAILROAD CROSSING

Team #: _____ **Possible Score:** 100

Instructions: Place a check mark in the box for each item adequately performed Deduct ten points from the possible score of 100 for every item not adequately performed (blank box).

- Activate hazard lamps upon approach to tracks
- Silence the students upon approach to the tracks and when stopped by raising hand in view of judges
- Check mirrors for traffic behind the bus (verbalize)
- Stop front of bus 15' to 50' before nearest rail of tracks
- Open driver's window and entrance door to listen
- does **not** use alternating flashing lamps during R.R. crossing
- Close door before proceeding across tracks
- Check carefully in both directions, moving actively in the bus seat to look around view obstructions on the bus, before proceeding across the track
- Avoids proceeding across tracks until flashing R.R. Lights are off
- Cancels 4-way hazard lamps after completely across tracks

TOTAL SCORE (out of 100): _____

Scorer #1 Initials _____ **Head Judge Initial's** _____

Scorer #2 Initials _____ **Final Score:** _____

2011 State Special Needs Team Safety Rodeo Score Sheet SERPENTINE

Team #: _____ **Possible Score:** 110

Instructions: *Place a check mark in the box for each driving error made. For this exercise you will deduct ten points from the possible score of 110 for each driving error or each checked box.*

- Driver begins event on the right hand side of the barrel
- Does not touch 1st barrel
- Does not touch 2nd barrel
- Does not touch 3rd barrel
- Does not touch 4th barrel

Curb lines:

- Crossed curb lines one time
- Crossed curb lines two times
- Crossed curb lines three times

Backing Maneuver:

- backed up bus one time
- backed up bus two times
- backed up bus three times

TOTAL SCORE (out of 110): _____

Scorer #1 Initials _____ **Head Judge Initial's** _____

Scorer #2 Initials _____ **Final Score:** _____

**Sixth Annual
Special Needs Team Safety Competition
Written Test February 5, 2011
Lawrenceville, Georgia**

Driver's Name: _____

Monitor's Name: _____

School System represented: _____

Possible Points: **35**

Your Score: _____

Question #1 (10 possible points)

1. According to a recent issue of "Transporting Students with Disabilities and Special Needs" (published by The Federal News Services, Inc.):

What is APD? _____

What other disability is APD often mistaken for? _____

List at least four symptoms of APD:

1) _____

2) _____

3) _____

4) _____

List at least three of the five problems areas for APD according to a national organization referenced by "Transporting Students with Disabilities and Special Needs" and give a definition/description of each:

1) _____

2) _____

3) _____

Name the national organization website that was referenced by “Transporting Students with Disabilities and Special Needs” regarding APD problem areas:

Question #2 (5 point value)

2. The Federal Motor Carrier Safety Administration research shows that drivers who send and receive text messages take their eyes off the road for an average of _____ seconds out of every _____ seconds while texting. At _____ miles per hour, this means that the driver is traveling the length of a football field, including the _____, without looking at the road.

Question #3 (5 point value)

3. According to the Georgia Department of Education School Bus Specifications each special needs bus equipped with a wheel chair lift shall be equipped

with a _____. It shall be of a _____ design that meets ASTM D4151-92 _____

_____. Evacuation type portable stretchers

(vinyl with handles) are not to be _____

_____ but may also be specified by the LEA in addition to the _____

_____.

Question #4 (5 point value)

4. According to the Georgia Department of Education School Bus Specifications the design load of the lift shall be at least _____ pounds. Working parts, such as _____, _____ and _____, which can be expected to wear, and upon which the lift depends for support of the load, shall have a safety factor of at least _____, based on the ultimate strength of the material.

Question #5 (5 point value)

5. While the number of college students studying Spanish, French and German increased only modestly from 2006 to 2009, enrollment in _____, the _____ most-popular language – surged more than _____ percent, according to a new report from Modern Language Association. With the deep budget cuts of the recession, some universities have cut back their language programs. Even so, enrollment in foreign language classes grew _____ percent from 2006 to 2009. More than 900,000 students enrolled in _____ classes last year, compared with only 4,304 in 1995.

Question #6 (5 point value)

Wheelchairs are the primary mode of transport on the school bus for many children with special needs. Most wheelchairs have not been developed as certified transit devices and are not currently subjected to any crash-testing requirements. A certified transit wheelchair is one that meets voluntary design and performance requirements for use as a seat by their occupant when traveling in a motor vehicle. Rehabilitation therapists can help identify products that are certified by the manufacturer to meet this standard.

Whenever possible a certified transit wheelchair should be used for school bus transportation. Research has provided a basis for recommendations concerning occupant securement for children who must ride in a wheelchair or children with other special needs who are transported on a school bus.

However, best recommended practices indicate that there are several essential items that must be on each wheelchair. The required items for both manually and electrically operated wheelchairs are which of the following 7 items:

1. Safety lap belt (automobile style with male/female interlocking device) in working condition
2. Working hand brakes for manually operated wheelchairs
3. A retractable securement system with seven points of securement
4. Electric wheelchairs must have working manual hand brakes or automatic brake activation when wheelchair power is disengaged
5. Properly fitted wheelchair
6. Properly inflated tires
7. Properly positioned headrests
8. Footrests
9. A five point harness restraint built into the wheelchair
10. Anti-tilting devices

References

Transporting Students with Disabilities and Special Needs
School Bus Fleet Magazine
Georgia Department of Education
Council for Exceptional Children
<http://public.doe.k12.ga.us>

**Thank you for your interest in the Special Needs School Bus Safety Rodeo
and for your dedication to the safety and well-being of your students!**

Best of Luck to you all and we look forward to seeing you in 2011!

TEAM REGISTRATION FORM
2011 State Special Needs Team Safety Rodeo
February 5, 2011 Gwinnett County, Georgia

It is recommended by the Special Education Committee that all participants be free of any preventable accidents for one full year prior to participating in the State Special Needs Rodeo.

**Driving Event Buses – 2005 International, VT 365 Engine
Auto Trans, Air Brakes, Air Doors**

**Wheelchair Loading and Securement Buses – 2005 International, Ricon Lift and SurLock
wheelchair securement systems.**

Emergency Event Buses – 2005 International, Auto Trans, Air Brakes, Air Doors

Pre-trip Inspection Buses – 2005 International, Auto Trans, Air Brakes, Air Doors

Team Registration (one form per team), by submitting this form you have read and understand the guidelines and rules for participating in the rodeo.

Driver _____

Attendant/Monitor _____

School District _____

Address _____

City _____ State _____ Zip _____

Daytime Phone _____

Email _____

**Complimentary T-shirt. The shirt size is a man's shirt
(Circle size desired for each participant)**

(Driver) S M L XL 2X 3X Shirt size

(Attendant) S M L XL 2X 3X

(Tee shirt sizes are not guaranteed if registering after January 11, 2011)

Registration: there is no charge to register your team.

If you have any questions about the Rodeo call: Sheila Towers, Cherokee County School District, 770-720-2112 or send an email to: sheila.towers@cherokee.k12.ga.us

Observers: Admission is FREE for observers, refreshments are available for purchase.

Please fax completed form to:

Sheila Towers 770-479-2775

Please submit before January 11, 2011

**JUDGE / VOLUNTEER REGISTRATION FORM
2011 State Special Needs Team Safety Roadeo
February 5, 2011 Gwinnett County, Georgia**

State Special Needs Team Safety Roadeo

Judge or Volunteer Registration (one form per person)

Person's Name _____

School District _____

Address _____

City _____ **State** _____ **Zip** _____

Daytime Phone _____

Email _____

**Complimentary T-shirt. The shirt size is a man's shirt
(Circle size desired)**

**S M L XL 2X 3X Shirt size
(Tee shirt sizes are not guaranteed if ordered after January 11, 2011)**

Please fax this form to Sheila Towers, 770-479-2775

Overnight Accommodations

(If required)



Country Inn & Suites Lawrenceville

989 Duluth Highway, (SR 120),
Lawrenceville, GA 30043, USA

Reservations: 1-800-596-2375 US/Canada

Telephone: (770) 339-1991 **Fax:** (770) 339-8471

100% non-smoking facility

Welcome to our Beautiful Lawrenceville Hotel near Discover Mills

The Country Inn & Suites hotel in Lawrenceville, Georgia promises friendly welcome, exceptional accommodations and all of the amenities leisure and business travelers have come to expect from hotels. Lawrenceville, Georgia, located just north of Atlanta, is home to many popular attractions, from golfing to shopping at Discover Mills Mall For your convenience, we also feature an outdoor pool, Fitness Center, free high-speed Internet access and a complimentary breakfast buffet available every morning at our Lawrenceville hotel.

Directions:

Atlanta: I-85N to exit 106(GA Hwy.316). Exit Riverside Parkway and turn left. Turn right on Duluth Highway/Hwy 120 and hotel is on your left.

Hotel Amenities

High-Speed
Internet
Outdoor Pool
Fitness Center
Suites

Gainesville: Take I-985S to I-85S to exit 107 (Duluth Hwy/Hwy 120) turn left. Go approx. 4.5miles and hotel is on your left.

Athens: Take Hwy. 316 West to Riverside Pkwy. Turn right onto Riverside Parkway and right onto Duluth Highway/Hwy 120. Hotel is on your left.



Rooms >

Comfort and affordability meet at our Lawrenceville hotel's smoke free facility. The Country Inn & Suites offers comfortable hotel rooms, equipped with soft-top mattresses, triple pure white sheeting and soft down pillows. Stay with us and enjoy two phones, microwave, refrigerator, 27" TV and more.



Services >

Staff at the Country Inn & Suites offer "southern hospitality" at its best. After a day of activity, kick back and relax with our standout services. Take a dip in the outdoor pool, enjoy a vigorous workout and stay connected with free weekday copies of *USA Today* and complimentary high-speed, wireless Internet.



Dining >

An award-winning breakfast awaits you at the Country Inn & Suites Lawrenceville hotel. Enjoy reading the newspaper at our free breakfast featuring hot Belgian waffles, sausage, gravy, biscuits, cereal, fresh fruit, coffee and more. In addition, we are convenient to area restaurants, including Chili's, Diggers Sports Bar, Old Towne Grill and Samurai Japanese Restaurant.

- **The required age to check into this hotel is 25**
 - **Must have a valid credit card or debit card**
 - **Must have a valid up-to-date Driver's License**
- **We are a smoke free hotel; the penalty for smoking in a non-smoking room is a \$500 minimum charge**



we love having you here.®

hotel fact sheet

hampton inn lawrenceville

1135 Lakes Parkway, Lawrenceville, Georgia, USA 30043
Tel: 1-770-338-9600, Fax: 1-770-338-0038

- [book now](#)
- [find out more](#)
- [forward to a friend](#)

our hotel

See how the past comes alive in Lawrenceville, a historic small town where learning about history can be fun... even frighteningly fun in this supernaturally-tinged area. The Hampton Inn® hotel in Atlanta/Lawrenceville/Gwinnett County is in close proximity to the cities of Buford, Suwannee, and Duluth, and within a few minutes of the Mall of Georgia, Gwinnett Place Mall and Briscoe Field.



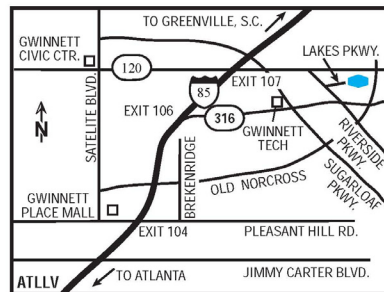
hampton guarantees 100% satisfaction



If you're not completely satisfied, we don't expect you to pay.

directions to our hotel

I85-N to exit 106(GA Hwy.316). Exit Riverside Pkwy. and turn left. Turn right onto Lakes Pkwy. I85-S to exit 107 (Duluth Hwy/Hwy 120) turn left. Go approx. 4 miles to Riverside Parkway, turn right. Turn left onto Lakes Parkway.I-85S to exit 107(Hwy 120/Duluth Hwy).Turn left on Hwy 120/Duluth Hwy. and follow approx. 3 miles to Riverside Pkwy. Turn Right onto Riverside Pkwy. Hotel approx 1/2 mile on left at first traffic light.



our best rates, guaranteed.



If you book a lower rate on a Hilton Family booking channel, we'll not only match that rate, we'll give you a \$50 American Express® Gift Cheque.

clean and fresh hampton bed™

Linens and duvet are washed fresh for every guest. You'll rest easy on our premium pillow-top mattress with plush comforter, crisp white duvet and your choice of comfy pillows.

where to go and what to do

Explore local history at the Veteran's War Museum and the Lawrenceville Female Seminary, as well as the Historic Lawrenceville Courthouse-it's all within minutes of our hotel in Lawrenceville. Discover more of this small town's past in the historic downtown square. Stroll the quaint brick-paved sidewalks, replete with unique shops, personable restaurants, coffeehouses, museums and more. Our hotel in Lawrenceville is also within reach of attractions like the colorful Ghost Tour, featuring local tales and civil war stories that will send a chill down your spine while also teaching you about the area.

breakfast is ready, and at Hampton, it's on the house.

Enjoy our complimentary On the House® hot breakfast. Menu items rotate and may include such offerings as sausage patties, eggs and French toast sticks. And of course, all the coffee you'd like.

our rooms

Our promise to you includes a clean, comfortable hotel room. In fact, we have 85 of them! If you're traveling with your family, you may opt for a room with two beds.

hotel highlights

- Free Hot Breakfast with Waffle Stations
- Free Fresh Strawberry Lemon Water & Coffee served in our lobby daily
- 42" Flat Screen LCD HDTV's in all guest rooms
- Near Arena at Gwinnett Center, Gwinnett Medical Center & Historic Downtown Lawrenceville



hampton.com

Present your tax papers at check-in to receive tax exempt status.

Directions to Benefield Elementary School from the Country Inn and Suites: Turn right out of the hotel onto Duluth Hwy. Turn left onto Riverside Parkway. The school is 1.3 mile on your right.

Directions to Benefield Elementary School from the Hampton Inn: Turn right out of the hotel onto Lakes Parkway. Turn left onto Riverside Parkway and school is 1 miles on your right.

Directions to Benefield Elementary School:
Atlanta: I-85N to exit 106(GA Hwy.316). Exit Riverside Parkway and turn right. The school is 1/2 mile on your right.

Gainesville: Take I-985S to I-85S to exit 107 (Duluth Hwy/Hwy 120) turn left. Go approx. 4 miles to Riverside Parkway and turn right. The school is 1/2 mile on your right.

Athens: Take Hwy. 316 West to Riverside Pkwy. Turn left onto Riverside Parkway and school is 1/2 miles on your right.

If you would like to bring something to keep yourself entertained (books, iPod, portable DVD player, laptop computer) during the time you are waiting, please feel free to do so.